

Super Flow Tubes Yo!

Description:

Build a sculpture you can play with! Connect Super Flow Tubes into infinite shapes and run bright LED marbles through the sculpture for a super fun and interactive flow art experience. Tubes is a marble run that looks like art that you can pick up and play with. Great for busy minds and hands. Level-up your desk or coffee table and interact with Tubes to unlock great ideas by day, and then rock the dance party with a hand-held lightshow at night. I am happy to have a patent pending (19/203,500) on Super Flow Tubes and I make Tubes at home with love and care in Oak Park, Illinois, USA. Have fun and find your flow with Super Flow Tubes Yo!

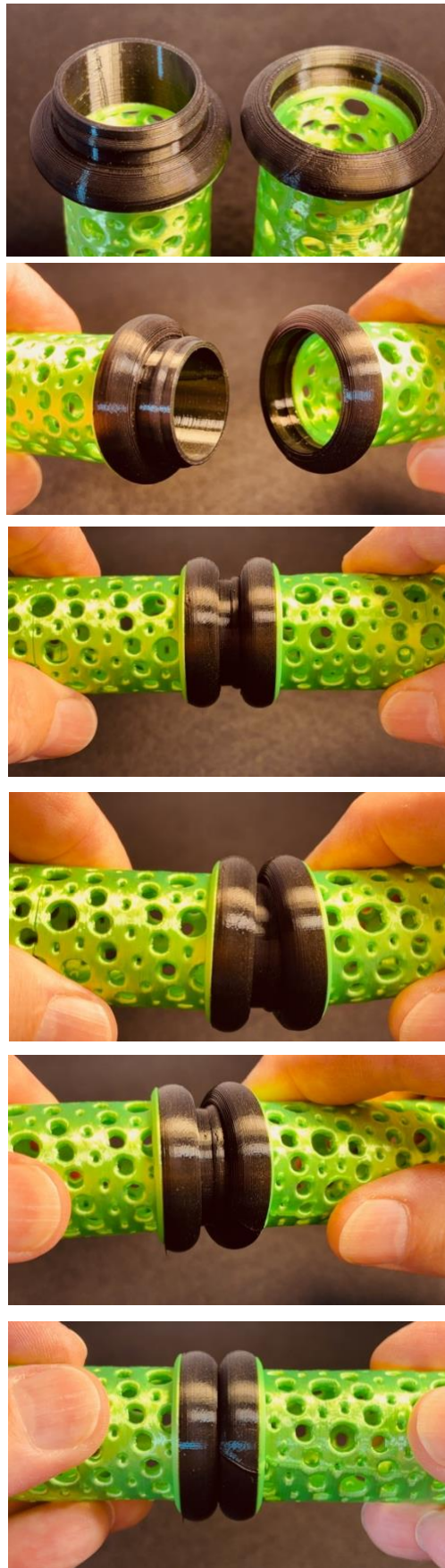
Contents: 8 curves, 4 straight Tubes, 3 glass marbles, 3 LED marbles, and 6 3v CR1220 coin cell batteries.



How to use:

Connecting & Disconnecting Tubes:

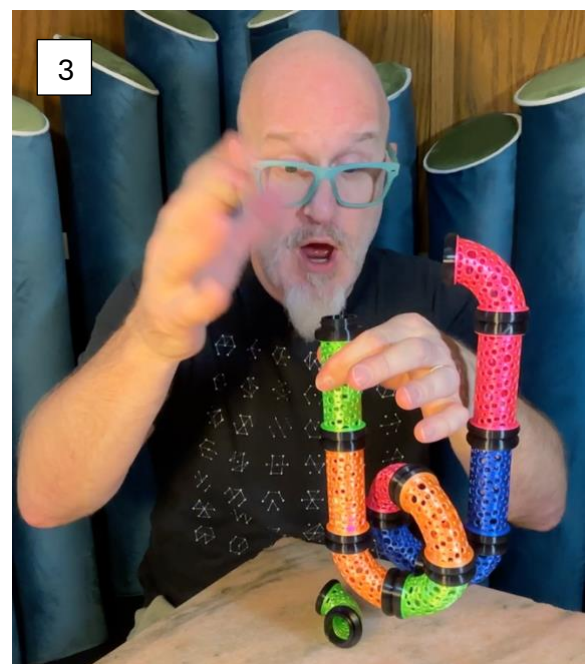
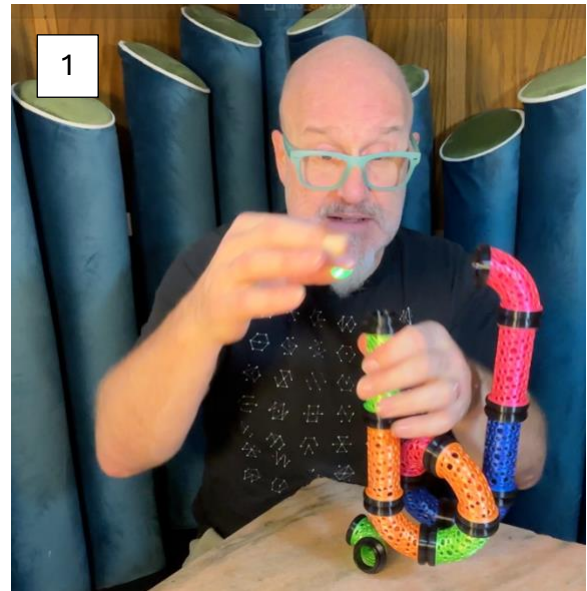
Each Tube has a hard plastic body with rubber male and female connectors on each end. To connect one tube to another, insert the male connector of one tube into the female connector of another tube and slightly wiggle it in until it clicks into place. To disconnect pull the two Tubes apart also while slightly wiggling. It makes a strong connection which requires some effort to connect and disconnect the Tubes, wiggling in and wiggling out - or - slightly angling and twisting one tube relative to another will make connecting and disconnecting much easier.



Please be careful: When connecting or disconnecting, it is possible to break a tube if too much force is applied or if one tube is bent at too great an angle relative to another tube. If this happens contact Super Flow Yo customer service.

Add the Marbles:

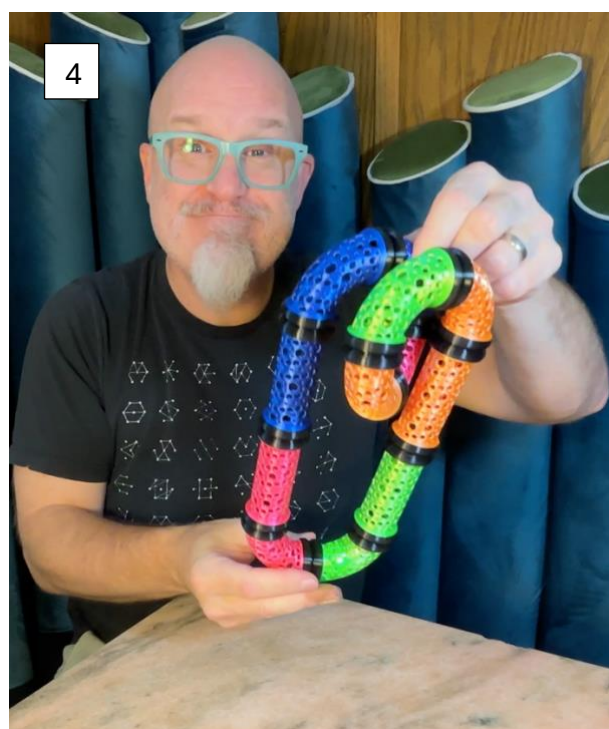
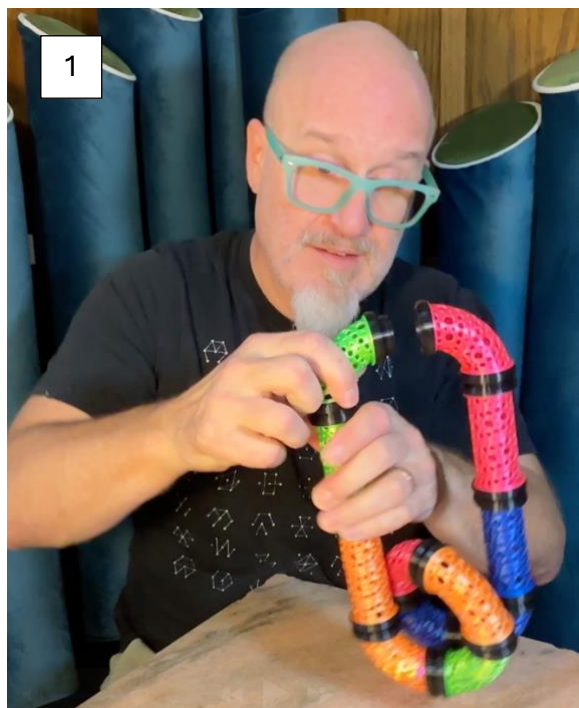
Insert one or many marbles into an open end of the Tubes sculpture you create, run them from one open end to another or close the loop to enclose them within the sculpture.



Closing the Loop:

Tubes are different from other marble runs in how they fully enclose the marbles within the tracks, and you can close the entire loop by connecting the beginning to the end of the connected tubes, and hold it in your hands to move the sculpture around as a whole to circulate the marbles within.

From simple circles to complex structures, there are no limits to how many tubes can be connected or how many shapes you can create!



LED Marbles:

Turning on:

LED Marbles are split in the middle to have a top and bottom half. To turn on, rotate one half **clockwise** (no more than a *quarter turn*) in relation to the other half at and the light will turn on. You may need to cautiously rotate back and forth slightly until the light is consistently on.



Turning off:

Rotate one half **counter-clockwise** in relation to the other half only just enough to turn the light off.



Please be careful: When turning and LED marble on or off, if the top-half is rotated more than a quarter turn relative to the bottom half, or turned in the wrong direction, it is possible to dislocate the top and bottom halves from each other. If this happens follow the “Re-assembly of LED Marble” instructions to put the LED marble back together and test it.

Changing the Batteries:

Separate the LED Marble top from bottom by turning one half counter **clockwise** (no more than a quarter turn), until it meets resistance, then pry the top half from the bottom half at the middle seam with a fingernail or thin screwdriver. Each LED marble uses Two 3V CR1220 lithium batteries, that snugly fit into the bottom half with the Positive (+) signs each *facing up*. (if the batteries don't snugly fit, then they are likely in the wrong half). Once the batteries are replaced, re-attaching the bottom to the top of the LED marble requires the parts to be aligned in a particular fashion.

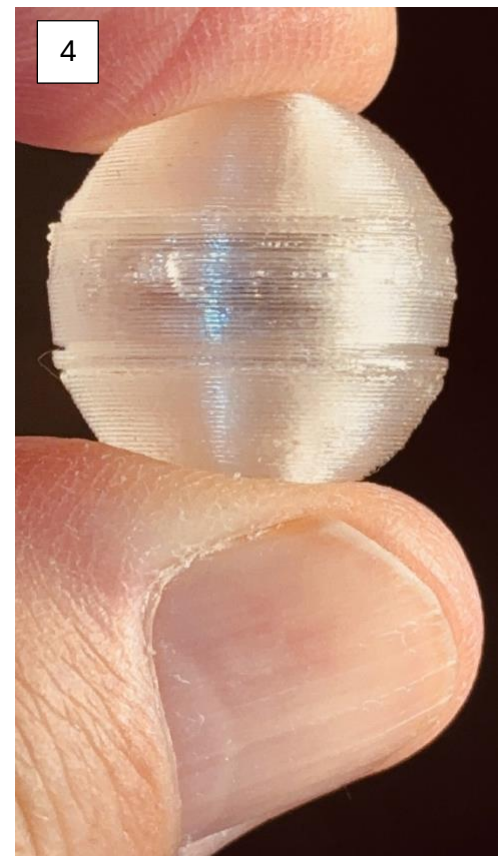


Re-assembly of the LED Marble:

Hold the bottom-half in one hand with the batteries facing upward and the side metal terminal (hook shaped) positioned at 12:00.

Hold the top-half in the other hand with its open-half facing downward above the bottom-half with the metal terminal (hook shaped) positioned at 9:00.

In this position there are tabs on one-half aligned with slots on the other-half to allow you to lower the top-half onto the bottom-half. The LED marble is made of a flexible material and it needs to be wiggled into position.



Re-assembly of the LED marble-continued:

When there is no gap between the top and bottom halves, turn the top-half **clockwise** relative to the bottom-half until the light turns on (and no further). Turn the top-half **counter-clockwise** until the light turns off. Turn on and off 2-3 times to make sure the two halves are well nested and the light is working properly.



About Super Flow Yo:

Super Flow Yo is about supporting our journey to have fun and find our flow, Yo! I am Stephen Hill and I am thrilled to share my inventions, designs and creations with you on superflowyo.com. I currently make the all items I sell by hand at home using things like sewing machines, 3d printers, plyers and fabric dyes. I am happy to have patents pending on my Tubes and Flyer inventions and even more excited to be able to make them at home and sell them independently online. It is also my joy to develop the Super Flow Yo business as its own art form that combines business and art in fun ways. The concept is simple enough, I want to do "all the things" from the conception of an idea through to making it, selling it, and even fix it when it breaks, and do my best to help folks find their flow and have some fun along the way. I love doing "all the things" even though I am not so great at doing "all the things". I am learning a ton and will continuously make improvements so I can get as good as I can at all these things.

Thanks for joining me on this journey, I hope you enjoy the Super Flow Yo experience as much as I love making it a reality.

An honest warning about Tubes:

Please be aware that this is a home-made product and does not have a Children's Product Certificate, it has not yet gone through the testing that helps ensure that products are safe. Please be conscious of the greater risk you take on when playing with this untested product. That said, I have personally tested and made improvements over countless iterations to produce a high-quality product that is both safe and fun.

Tubes are recommended for ages 14+.

!! Tubes utilize marbles, which are small parts that pose a choking hazard, please keep marbles away from children under the age of 3.

!! The LED marbles included with Tubes contain coin cell batteries which pose an ingestion hazard for children. Please keep the coin cell batteries away from children.

Satisfaction Guarantee:

If the purchaser of any superflowyo.com product is dissatisfied for whatever reason, superflowyo.com will refund the purchase price and any taxes paid upon receipt of the product and confirmation it is in like-new condition within 30 days of purchase. The purchaser will be responsible for all shipping expenses. Please contact us through the form on superflowyo.com/contact/ or by email: support@superflowyo.com to request a RA# (Return Authorization Number), and get the instructions to return the product.

1 Year Super Flow Warranty on Flyers, LED marbles, Tubes, and Zorbites:

Thank you for your patience when one of our products breaks or doesn't work as it should. If our Flyers, LED marbles, Tubes, and Zorbites break under normal use, superflowyo.com will work with the purchaser to fix or replace the product at the expense of superflowyo.com, within 1 year of purchase. We will ask for photographic or video proof of the problem and will work with the purchaser to self-fix the problem if possible before replacing or refunding the product. We want our customers to have a good experience with our products and Super Flow Yo, we will be fair with you, thank you for being fair with us.

Trouble Shooting:

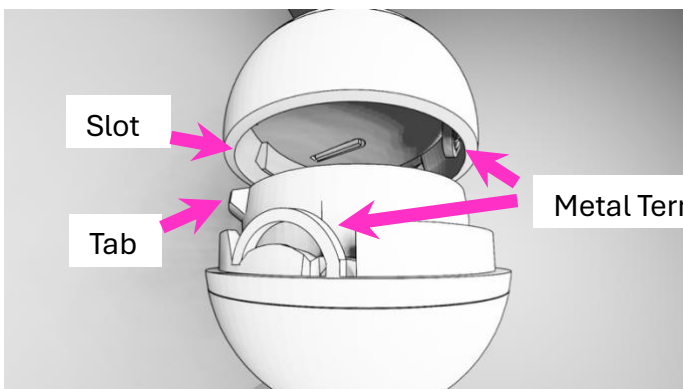
1. If Tubes feel too difficult to separate, use a large coin or a wide screwdriver to pry them apart at the connection point, be careful not to hurt yourself or break the tubes.
2. If the LED marbles aren't working...
 - a. If lights turn on but are very dim then...
 - i. Change the batteries
 - b. If lights are blinking on and off inconsistently then...
 - i. Make sure the LED marble top and bottom halves are tightly sandwiched together
 - ii. Rotate the top-half relative to the bottom-half back and forth to optimize circuit connection as much as possible
 - iii. Roll the seam between the top and bottom halves between your fingers, giving the LED marble a little squeeze around its middle. This may help the metal terminals connect better.

- iv. If the hook-shaped side metal terminals look bent out of shape and you are feeling bold and have a pair of small and narrow pliers, then open the LED marble, remove the batteries and bend the side metal terminal into a shape that matches the picture of the top-half or bottom-half. See "Re-assembly of LED Marble" to put it all back together and test it out.

Top-Half: Metal Terminal



Bottom-Half:



- c. If lights are totally off and not blinking then...
 - i. Open the LED Marble and make sure the two 3V CR 1220 coin cell batteries are both positioned with Positive sides facing up and negative sides facing down and snugly fit into the bottom-half

1. If this helps the lights turn on, but are dim then change the batteries
 2. If lights are now blinking on and off then follow instructions from Trouble shooting section: 2-b-iv
 3. If lights are still off and not dim or blinking, then contact Super Flow Yo support
3. If the LED marble's top and bottom halves won't connect
 - a. Rotate the top-half **counter-clockwise** relative to the bottom-half until it meets resistance, then with a fingernail or small screwdriver, pry the two halves apart at the seam.
 - b. If the hook-shaped side metal terminals look bent out of shape- see Troubleshooting section 2-b-iv.
 - c. Confirm the batteries are nested snugly into the bottom-half with Positive (+) sides facing upward.
 - d. Follow "Re-assembly of LED Marble" instructions to put it back together and test
 - e. If none of that works, contact Super Flow Yo customer service